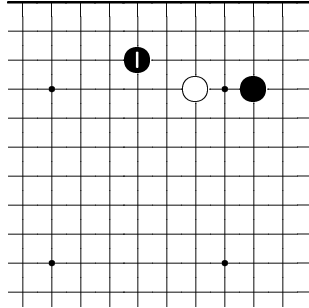


Comparison of Kyu and Professional Play
Two-Stone Corner Patterns

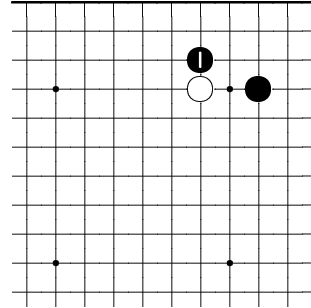
Peter de Blanc

June 14, 2010

0.1

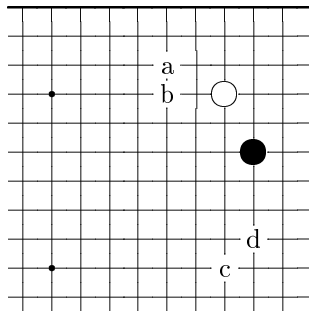


Against the high approach, kyu play the low pincer more than any other move.

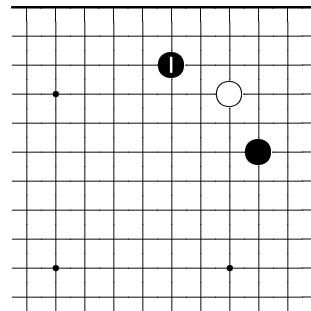


Professionals usually make this contact play.

0.2

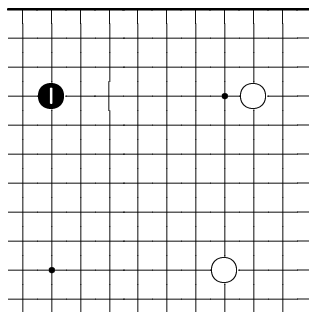


If white ignores an approach, kyu may play any of these followup moves.

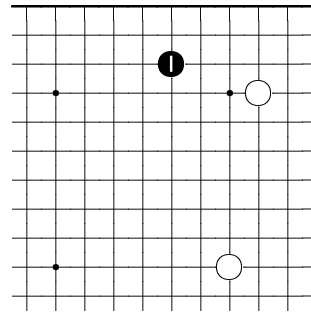


Professionals show a strong preference for this double-kakari.

0.3

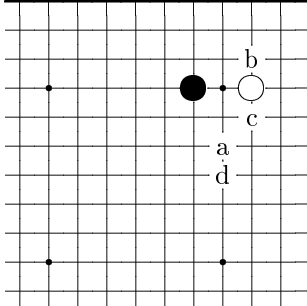


In this situation, kyu usually play this side hoshi.

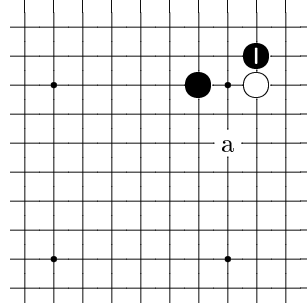


Professionals usually play a 2-space low approach.

0.4

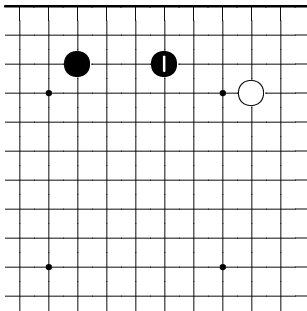


In this situation, kyus may play any of these moves.

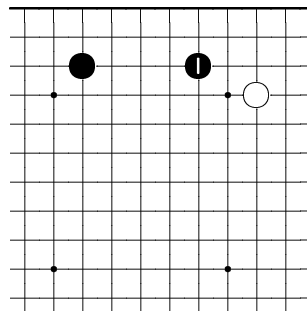


Professionals usually play *san-san*, and sometimes play at a.

0.5

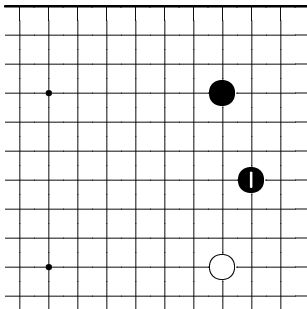


In this situation, kyu players sometimes play this combination 2-space approach and 2-space extension.

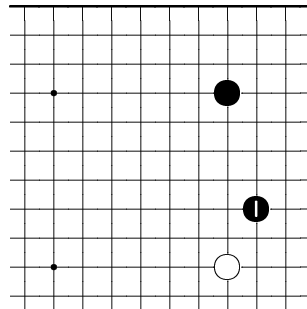


Professionals prefer the closer approach 10-to-1.

0.6

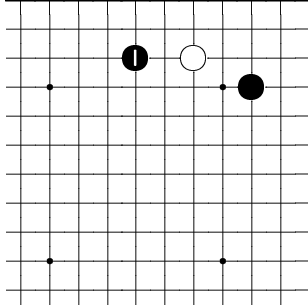


In this situation, kyus play a 2-space extension.

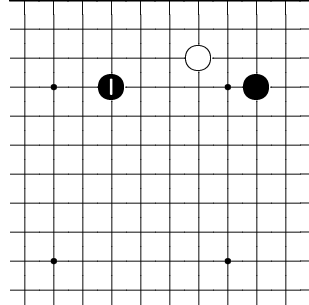


Professionals play a 3-space extension.

0.7

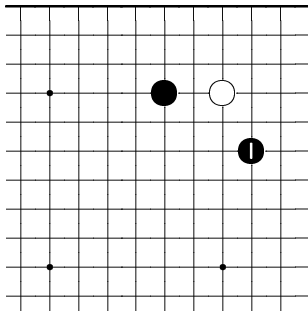


Against white's low approach, kyus most often play this low pincer.

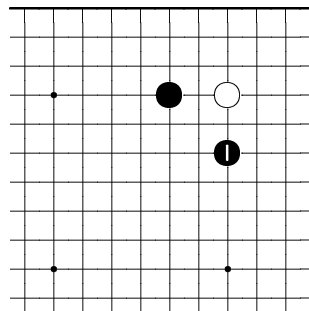


Professionals more often play a 2-space high pincer.

0.8

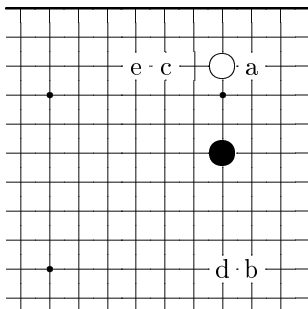


When white ignores this high approach, kyus follow up with a low approach.

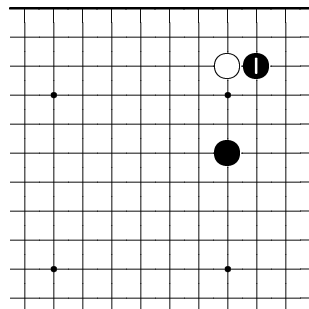


Professionals play a second high approach.

0.9

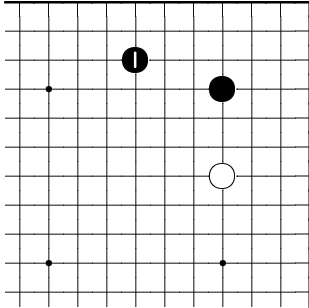


Against white's komoku, kyus may play any of these moves.

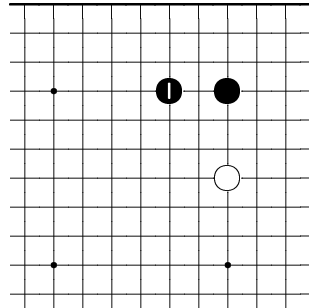


Professionals play at the 3-3 point.

0.10

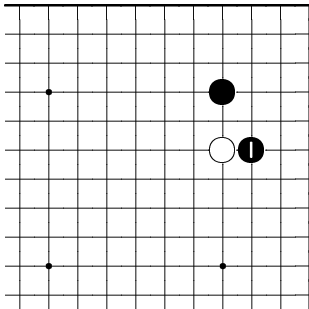


After this unusual *kakari*, kyus usually play this extension.

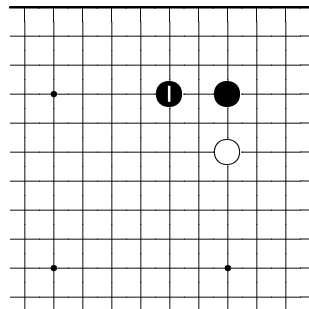


Professionals play this extension.

0.11



After this high *kakari*, kyus sometimes play this contact move.



Professionals play this extension.