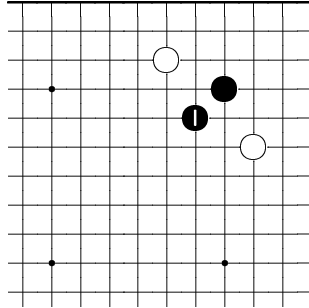


Comparison of Kyu and Professional Play
Three-Stone Corner Patterns

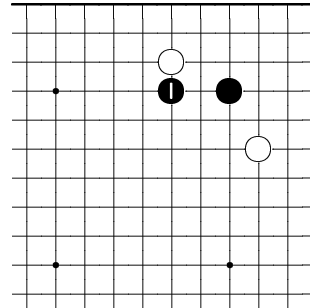
Peter de Blanc

June 14, 2010

0.1

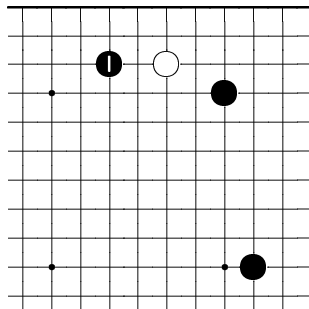


After a double kakari, kyus favor the diagonal play.

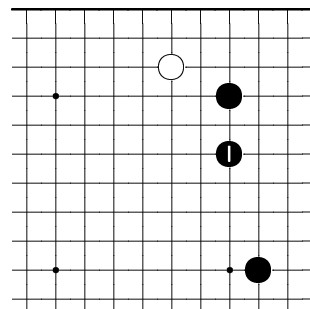


Professionals prefer a contact move.

0.2

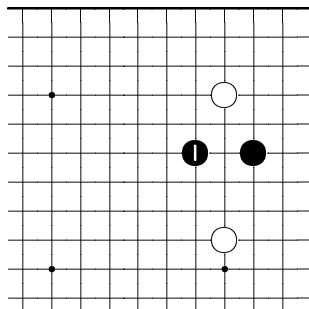


After white's approach, many kyus play a low pincer.

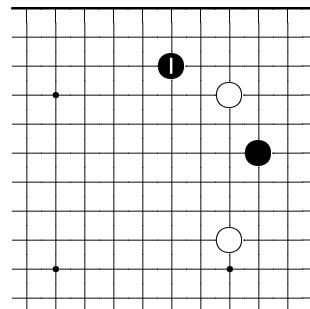


Professionals usually play this extension.

0.3

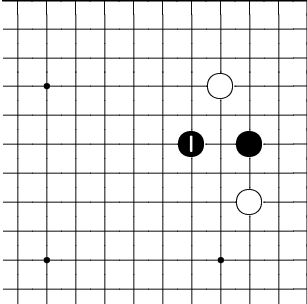


After this pincer, most kyus play a one-space jump.

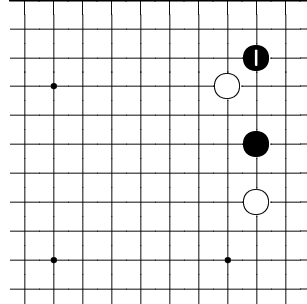


Most professionals play a counter-pincer.

0.4

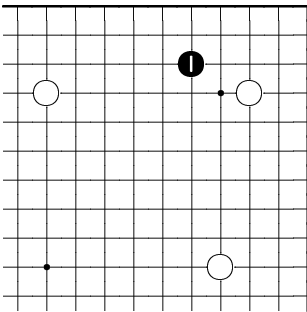


After this pincer, most kyus play a one-space jump.

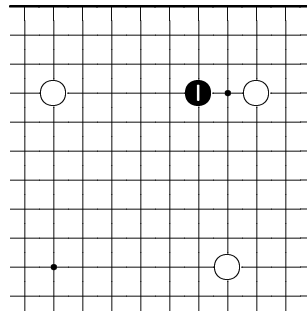


Professionals prefer to invade at the 3-3 point.

0.5

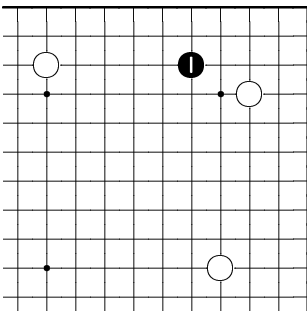


How should black move in here?
Many kyus favored a low approach.

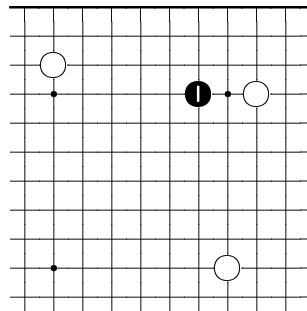


Professionals play the high approach.

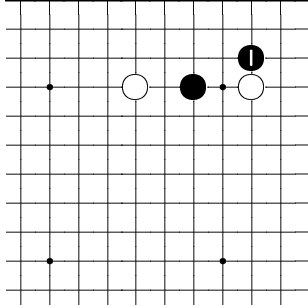
0.6



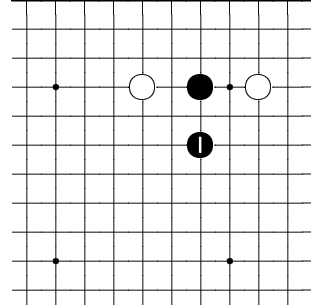
The same holds if the white stone on top is on the third line.



0.7

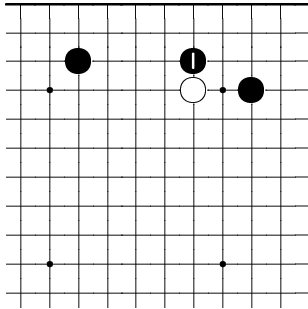


After this high pincer, kyus play a 3-3 invasion.

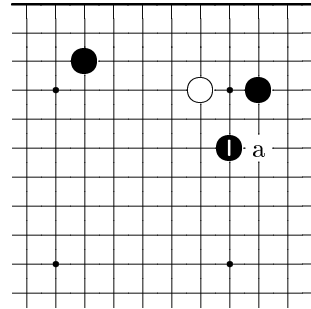


Professionals play a 1-space jump.

0.8

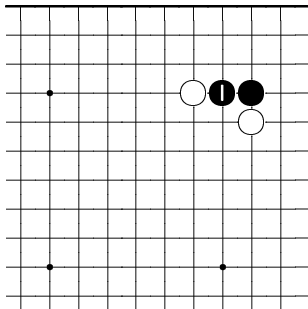


After white's approach, many kyus play this contact move.

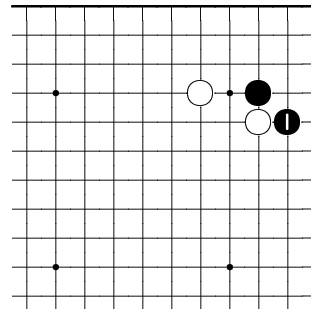


Professionals usually play this keima, or the one-space jump at *a*.

0.9

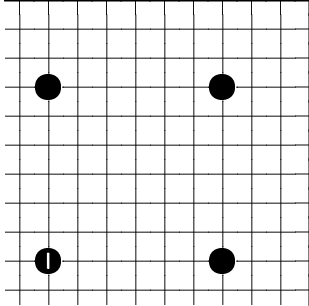


After white's outside contact play, many kyus played this bump.

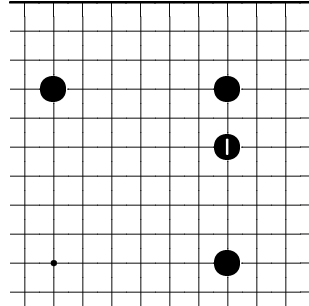


Professional players overwhelmingly preferred this hane.

0.10

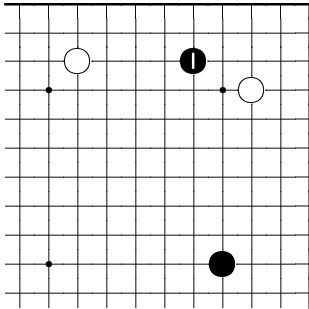


After three hoshi, kyu players find it natural to play a fourth.

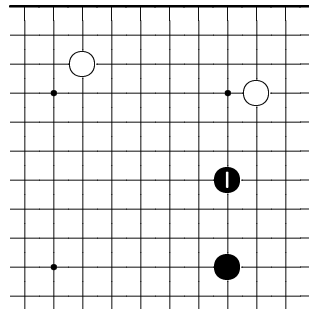


Professionals usually play an extension like this.

0.11

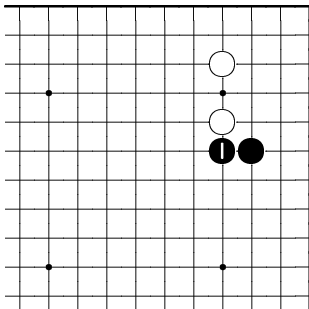


In this situation, kyus most often play this low approach.

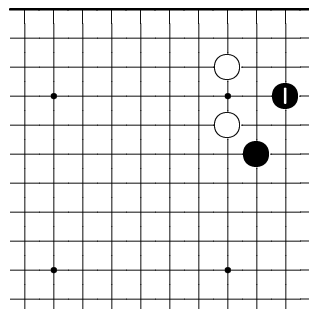


Professionals extend from black's side hoshi.

0.12

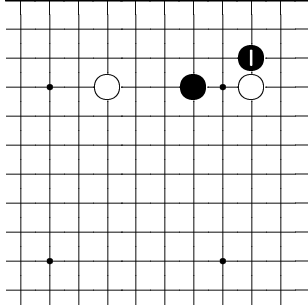


Against white's corner enclosure, kyus often play this nobi.

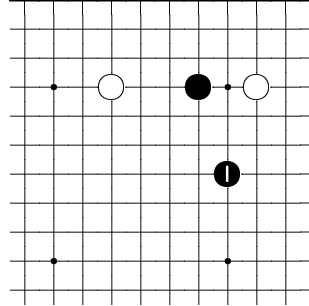


Professionals usually play this keima.

0.13

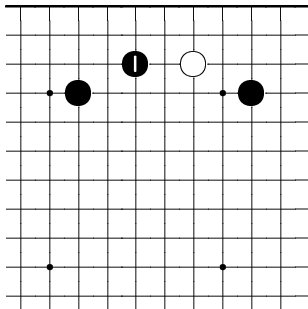


Against this 2-space pincer, kyus still play the 3-3 invasion.

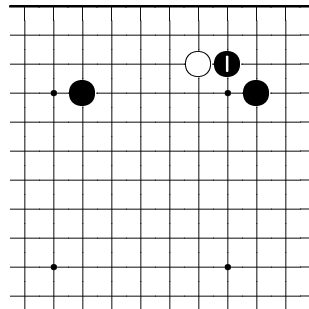


Professionals most often play this large knight's move.

0.14

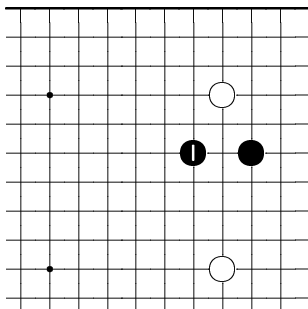


In this situation, kyus usually play this *keima*.

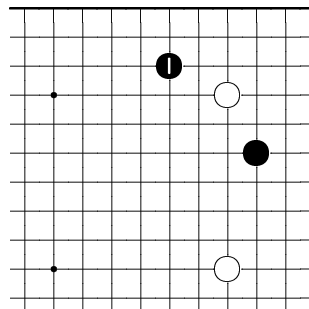


Professionals play *kosumi-tsuke*.

0.15

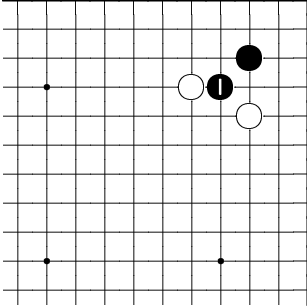


After this 3-space pincer, kyus most often play a one-space jump.

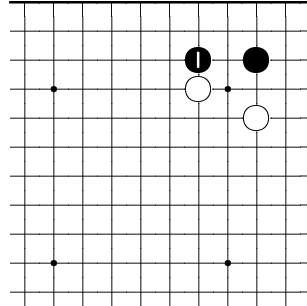


Professionals usually play a counter-pincer.

0.16

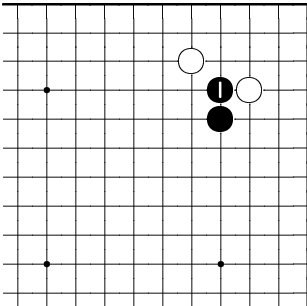


After white plays this keima, kyu's most often play this *kosumi-tsuke*.

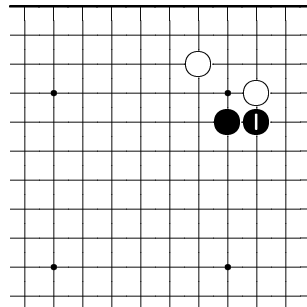


Professionals play this move.

0.17

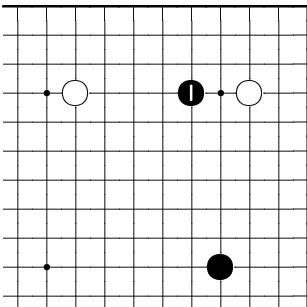


Against white's enclosure, kyu's often play this nobi.

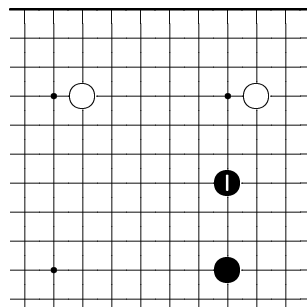


Professionals play this nobi.

0.18

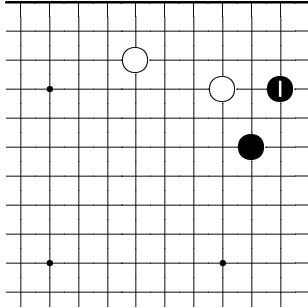


In this situation, kyu's most often play this high approach.

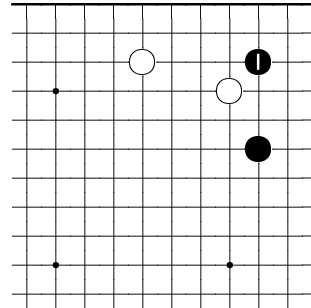


Professionals extend from black's side hoshi.

0.19

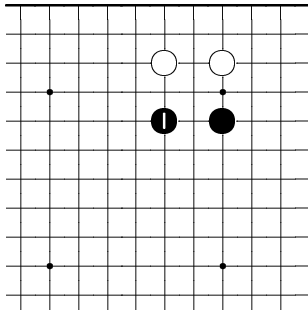


In this situation, kyus most often play this keima slide.

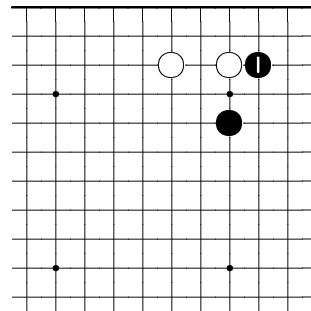


Professionals most often play this 3-3 invasion.

0.20

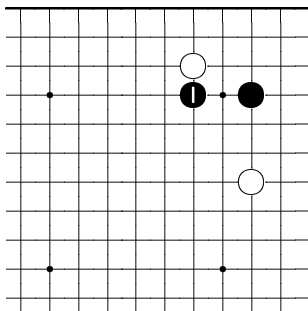


In this situation, kyus sometimes play this one-space jump.

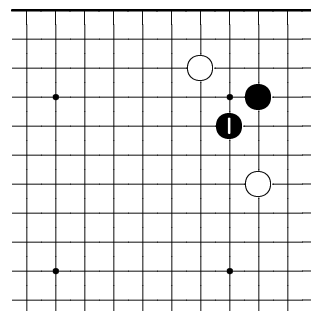


Professionals play this contact move.

0.21



Against this double kakari, kyus most often play this contact move.



Professionals usually play this ko-sumi.