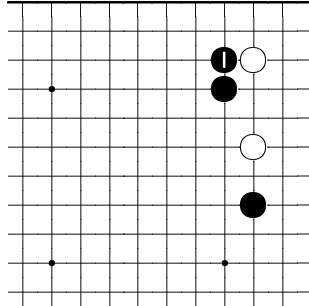


Comparison of Kyu and Professional Play
Four-Stone Corner Patterns

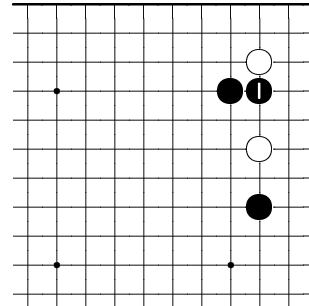
Peter de Blanc

June 14, 2010

0.1

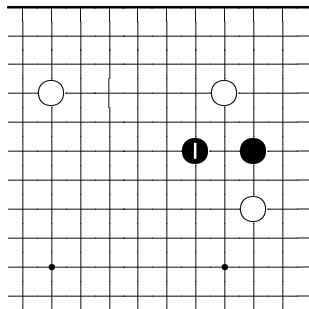


With no black stone on top, kyus still block this way quite often.

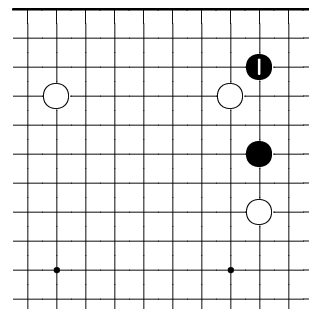


Professionals block in this direction.

0.2

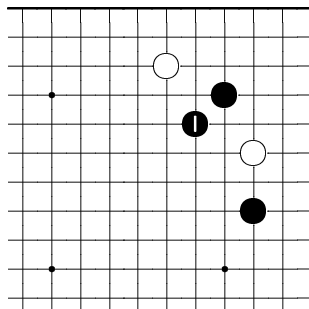


After white's pincer, kyus most of ten play this one-space jump.

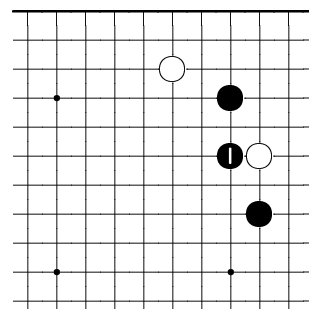


Professionals play this 3-3 invasion.

0.3

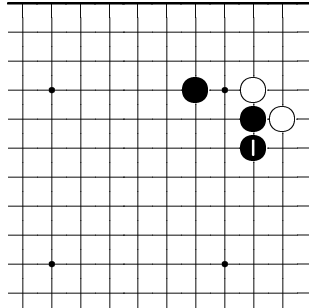


After white's counter-pincer, most kyus play kosumi.

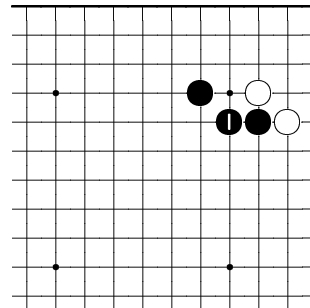


Professionals play this contact move.

0.7

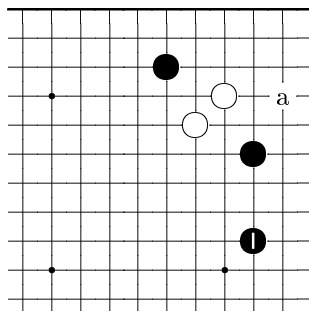


Kyus frequently play this nobi.

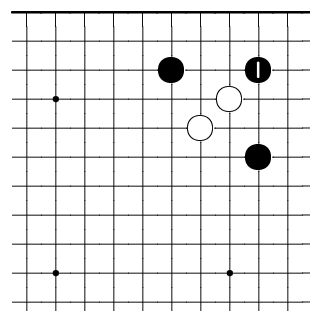


Professionals connect like this.

0.8

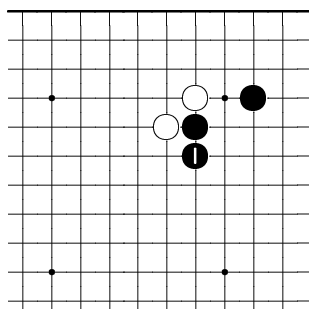


In this situation, some kyus play this extension, or a slide at *a*.

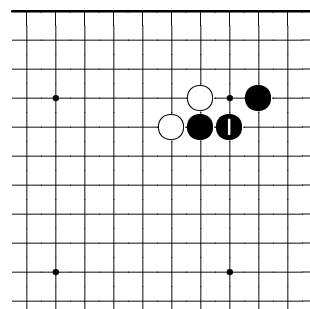


Professionals play this 3-3 invasion.

0.9

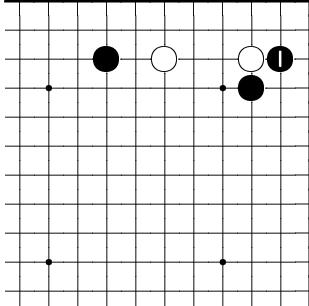


Kyus frequently play this nobi.

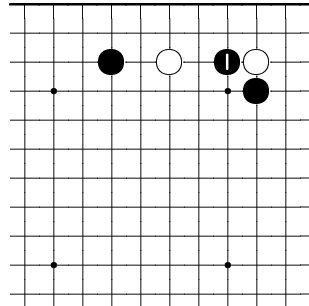


Professionals usually connect like this.

0.10

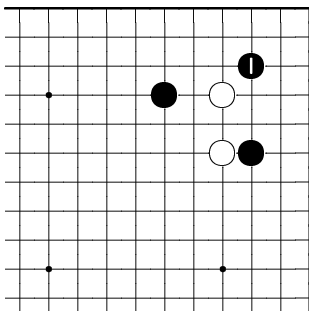


After white's 3-3 contact play, kyu's hane from the right.

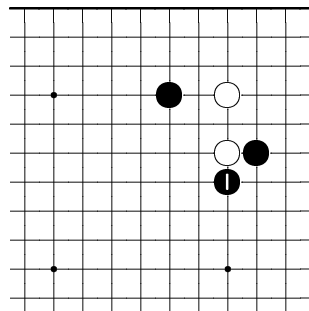


Professionals hane from the left.

0.11

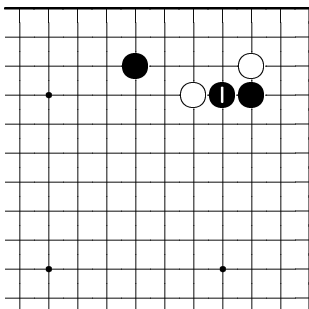


Some kyu's play this 3-3 invasion.

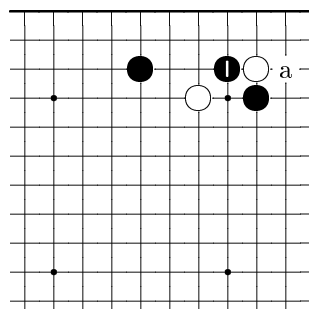


Professionals always play this hane.

0.12

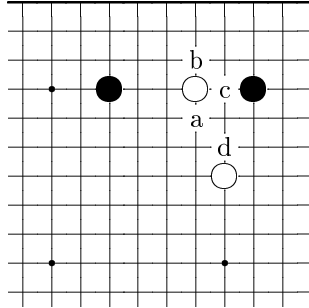


After white plays 3-3, many kyu's play this bump.

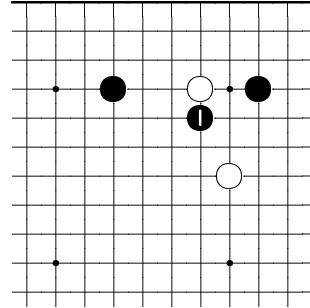


Professionals play here or at *a*.

0.13

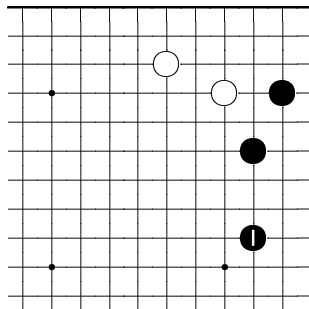


In this situation, kyus may play any of these moves.

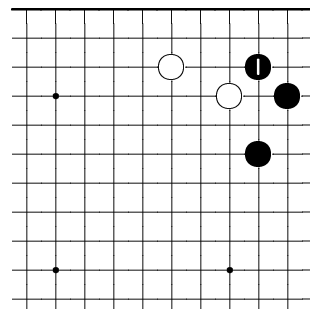


Professionals play here.

0.14

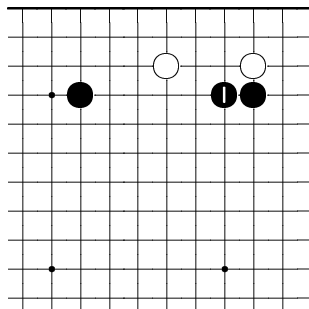


If white tenukis, this is the most common kyū follow-up.

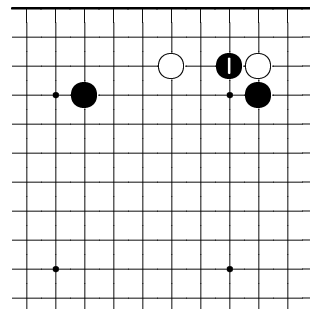


Professionals play here to take the corner.

0.15

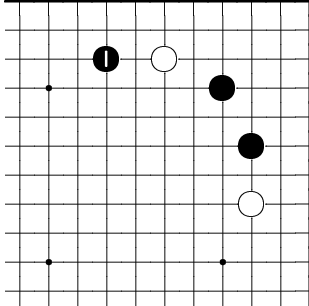


In this situation, kyus most often play this nobi.

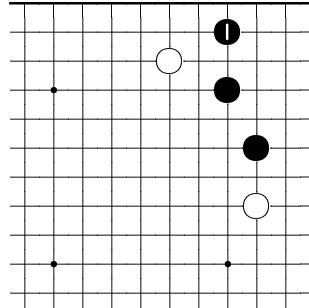


Professionals always play this hane.

0.16

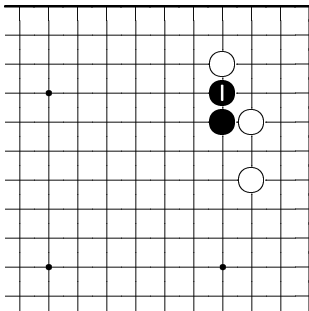


In this situation, kyu sometimes play this pincer.

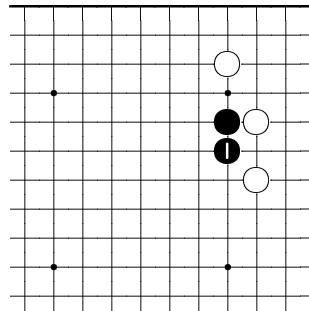


Professionals jump down like this.

0.17

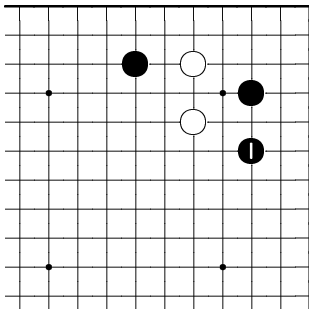


Kyu usually play this nobi.

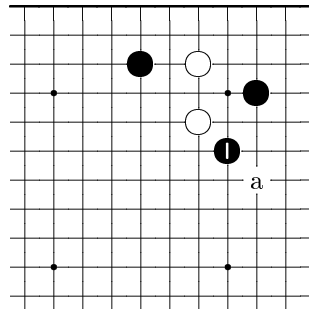


Professionals play this one.

0.18

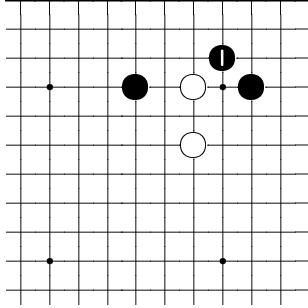


Kyu sometimes play this non-joseki move.

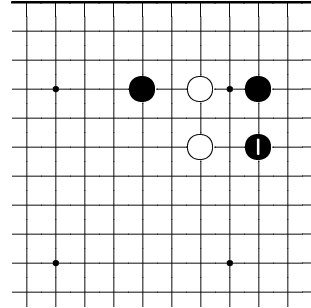


Professionals play here or at *a*.

0.19

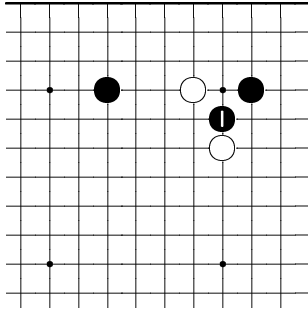


After white's one-space jump, kyu players enclose the corner.

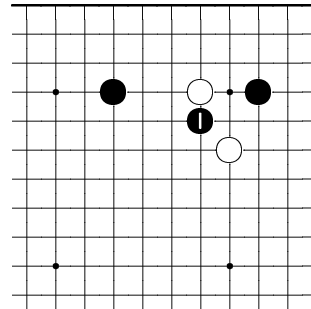


Professionals play this extension.

0.20

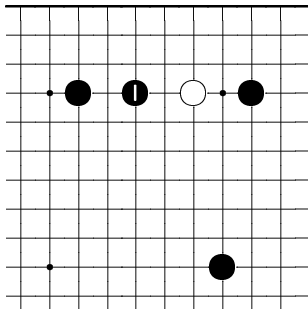


After white's keima, many kyus play this *kosumi-tsuke*.

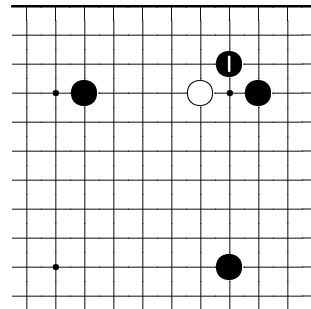


Professionals play here.

0.21



Against white's high approach, kyus play this pincer.



Professionals usually make this enclosure. They never play the pincer.